

25 BEAUTIFUL HOMES

SIMPLY ELEGANT

Relaxed interiors full of light and life

**Bold transformation
of a 1930s schoolhouse**

**New beginnings for
a Victorian barn**

**Colour & character
in a 1950s semi**

ESCAPE TO THE COUNTRY

Annie Sloan's colourful
French retreat

STYLE INSPIRATION

Decorating secrets
from the design experts

**HOMES WITH
STORIES TO TELL**

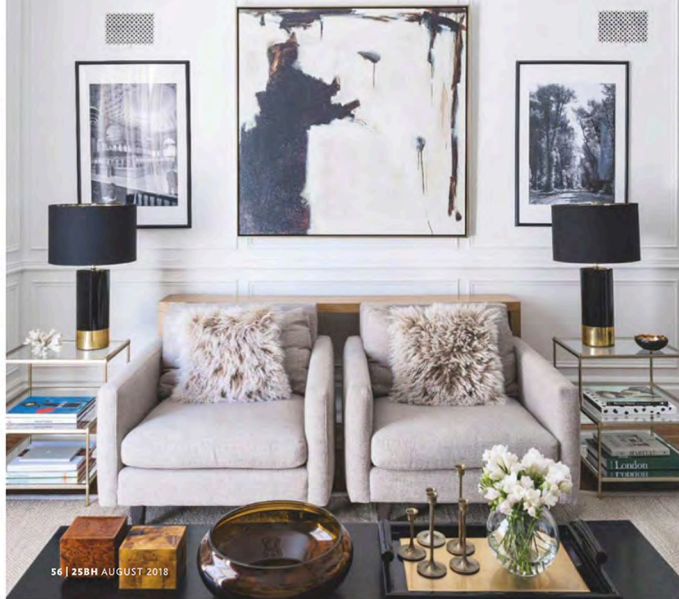
CLEVER CONVERSIONS & CREATIVE RENOVATIONS

SITTING ROOM
Sculptural lighting injects a touch of drama into this simply furnished space. Terrace side tables, \$209 each, West Elm. The Hunter chair has a similar shape, \$2,245, Elie. Create a bespoke sisal rug, from \$227, The Natural Rug Store. 'The Tuxedo' black and gold ceramic table lamps, price on application, Renew!

ARTFUL MOVE

Ines and Peter Mazzotta transformed their period home with sleek lines and striking art

FEATURE EMMA J PAGE | PHOTOGRAPHY ROBIN STUBBERT / GAP INTERIORS



56 | 25BH AUGUST 2018



HOME TRUTHS

THE PROPERTY
Detached bungalow built in 1877, with a fitness lateral addition
LOCATION Ontario, Canada
ROOMS Sitting room, kitchen, dining room, family room, study, three bedrooms, two bathrooms
PURCHASED 2014
PREVIOUS PROPERTY
"We moved to this property from a two-storey detached house in Toronto," says Ines.



Designers Ines and Peter Mazzotta were keen to leave behind the frenetic pace of Toronto when they made the move an hour west, to the historic university town of Guelph, just over four years ago. "Although we craved a calmer lifestyle, we still wanted to be part of a lively community and this town has a wonderful cultural, food and music scene," says Ines. "But, being smaller, it is easier to navigate. We were also drawn to the period architecture, as many of the properties here date from the late 1800s."

The one-storey building the couple and their two sons, Luca, now 14, and Jake, 10, came across is a case in point. "At first, the layout seemed a little unusual to us, as we were used to multi-level living," says Ines. "But the period features and high ceilings soon won us over." Nonetheless, the house needed a few tweaks to suit family living. "The flow needed adjusting, as there were three separate entryways to the dining room, and no clear access from there to the kitchen," Ines explains. So the couple closed off two of the doorways, knocked through between the existing dining room and kitchen to create an open-plan space, and added generous floor-to-ceiling French doors to provide easy access to the garden.

Although the property was in good shape, it needed plenty of contemporary touches. The previous inhabitants had owned a timber yard and evidence of their profession ran throughout the house, with curly maple kitchen units and an oversized



1 KITCHEN

Cabinetry painted in contrasting black and white with a marble countertop creates a chic, monochrome aesthetic. Charles Gosh stools by Kartell, \$178 each, Amara. The Antique Persian Tabriz rug is a good match, \$885, Rug & Weave. Vintage Barn pendant light, from \$229, Restoration Hardware

2 DINING AREA

Ines and Peter knocked through the original dining room into the kitchen for a more practical layout. Perugia ceiling light, price on application, Renew! Salvaged Parsons rectangular table is similar, \$3,395, Restoration Hardware. Walls painted in Swiss Coffee OC-45 regal select flat, \$20.50 for 0.94L, Benjamin Moore

3 FAMILY ROOM

A generous U-shaped sofa makes this area ideal for relaxing. Behind it, Ines hung favourite artworks on the wall, which is painted off-black to enhance them. Feature wall painted in Black Satin 2131-no regal select flat, \$20.50 for 0.94L, Benjamin Moore. Velvet linen pillows in Ocean, \$95 each, Elie



**1 MAIN BEDROOM**

An elegantly shaped Art-Deco style bench is an eye-catching addition, while a textured throw and purple cushions introduce a welcome hit of colour. Elizabeth bench, \$1,497.50, Black Rooster Decor. Try the Leonard chandelier, £389.95, Holloways of Ludlow. Bath artwork by Sue Prue, from \$104, Minted

2 JAKE'S BEDROOM

A feature wall covered in chalkboard paint encourages an element of creativity. Wall painted in Black Satin 2131-10, £27.50 for 0.94L, Benjamin Moore. Vintage desk, price on request, Singing Lady Emporium. Maggie Puppy by Euro Aarmio, from £56, Wallpaper Store

3 BATHROOM

Striking geometric wallpaper complements classic painted cabinetry in this space. Prismatic 912702 wallpaper, \$75 a roll, York Wallcoverings. 20th-century factory metal sconce, \$49, Restoration Hardware. Cabinetry painted in shade similar to Black Blue modern eggshell, \$67 for 2.5L, Farrow & Ball

DECORATING ADVICE

'Layering turns a room into an inviting space. I love well-curated collections of objects and textiles'

cherry mantelpiece in the sitting room. 'It felt a little dated,' says Ines. 'At the same time, much of the original plasterwork had been removed, so one of our first tasks was to reinstate mouldings and ceiling roses.' Peter, who runs Kelly Hopter Interiors along with Ines, did much of the work himself, overseeing improvements, laying new oak floors and, as a trained carpenter, overseeing cabinetry making.

The interior exudes a sense of calm, largely due to a constrained colour palette of white, black, coffee and soft neutrals. 'I work with colour all day, and for me, it's important to create a textural scheme,' says Ines. 'Our home is all about layering. I love sheens, hues and textures. Juxtaposing sisal and jute with silks, wool and velvets is a way of creating an organic, lived-in look, and accessories are important – from books and objects to glassware and vintage candlesticks.'

Of all their treasures, it's art that means the most to this family, and Ines has used her Maggie eye to unearth pieces from several quarters. 'Collecting art is a passion and I hunt everywhere, from galleries to flea markets,' she says. 'I began when I moved from Poland to Canada when I was 19, and I accumulated pieces gradually. I love mixing original art with affordable prints, especially portraits and theatre posters, while Peter is drawn to photography and abstracts.'

Organic shapes, from ceramics and glassware to lighting and sculpture, are the hallmark of this home, combined with subtle touches of glamour. But it's also a practical and lived-in space. 'The layout flows so well now,' says Ines. 'We love to hang out together, whether in the family room watching a film or relaxing by the pool.' And when Ines is working from home, it's nature that inspires her. 'We have a beautiful wild apple tree growing outside the bay window at the front of the house,' she says. 'Sometimes, I'll decamp from my office and revel in the dappled light that it creates in the sitting room. Our home has become a soothing sanctuary that works for all of us – moving here has certainly been good for the soul.' 🏡

FOR STOCKISTS GO TO WHERE TO BUY

